

FOND DU LAC COUNTY HEALTH DEPARTMENT

ANNUAL REPORT



Public Health
Prevent. Promote. Protect.

**Fond du Lac County
Health Department**

SERVING OUR COMMUNITY SINCE 1966

2022

160 SOUTH MACY STREET
3RD FLOOR
FOND DU LAC, WI 54935
www.fdlco.wi.gov

TABLE OF CONTENTS

Message from the Health Officer.....2

Our Organization.....3

 Mission, Vision, Values

 Board of Health

 Health Department Personnel

Strengthening Our Infrastructure.....8

 Health Equity

 Quality Improvement/Performance Management

 Workforce Development

 Accreditation

COVID-19 Response.....12

Public Health Services.....16

Women, Infants, & Children.....25

Fit Families.....29

Environmental Health.....30

Community Health and Prevention.....36

Financial Summary.....44

Organizational Chart.....45

Connecting with the Community.....46

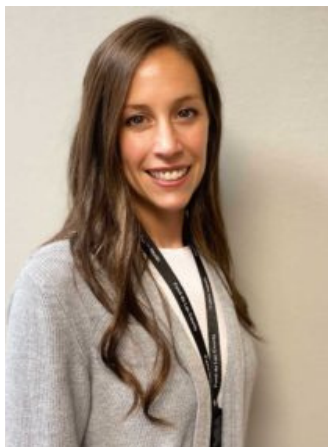
MESSAGE FROM THE HEALTH OFFICER

I am honored to present the 2022 Fond du Lac County Health Department Annual Report. This report reflects all the services provided by our department to carry out the 10 essential services of public health. Our Health Department strives to fulfill the essential services as well as our mission: Fond du Lac County Health Department improves lives by preventing disease, protecting the community, and promoting healthy living for all.

This year has been a transitional year for the Health Department, allowing us to move away from COVID-19 specific activities and return to incorporating necessary fundamental public health work we have not been able to do as COVID-19 activities were our focus.

Accreditation was a triumph we were able to claim as our own as of May, slightly earlier than we had expected thanks to the dedication of our staff! We are proud to share this announcement with our community. The designation of becoming an accredited health department indicates that we have a strong commitment to providing only the best services to our community, and we continue to work hard and better our services each day.

We thank our community partners for their continued support as we explore innovative ways to approach problems and strategies to improve the way we help our public's health. Special appreciation is extended to our County Executive's office, the community, schools, and allied agencies that collaborate with us to improve the health of the people of Fond du Lac County. This appreciation is also extended to the Board of Health and County Board of Supervisors.



Sincerely,

A handwritten signature in black ink that reads "Kimberly Mueller".

Kimberly Mueller MSN, RN
Health Officer
Fond du Lac County

10 Essential Services of Public Health

Monitor health status and understand health issues facing the community.

Protect people from health problems and health hazards.

Give people information they need to make healthy choices.

Engage the community to identify and solve health problems.

Develop public health policies and plans.

Enforce public health laws and regulations.

Help people receive health services.

Maintain a competent public health workforce.

Evaluate and improve programs and interventions.

Contribute to and apply the evidence base of public health.

OUR ORGANIZATION

Mission

Fond du Lac County Health Department (FCHD) improves lives by preventing disease, protecting the community, and promoting healthy living for all.

Vision

Prevent. Promote. Protect.

Our Values

Compassion - FCHD is committed to the dignity and respect for all.

Equity & Inclusion - FCHD embraces differences and respects all individual's opinions, beliefs, and cultures. We work to ensure everyone has access to opportunities that enable them to lead healthy lives.

Collaboration - FCHD partners with community members and agencies to achieve shared goals that enhance the health and well-being for all.

Competency - FCHD demonstrates public health best practices ensuring employees utilize skills, abilities, and personal attributes to enhance performance.



Staff celebrating the holiday season
Some staff not pictured

OUR ORGANIZATION

Public Health Essential Services

Core functions of a local public health agency as identified by the Institute of Medicine include:

- Assessment of community health status and available resources.
- Development of policy resulting in proposals to support and encourage better health.
- Assurance that needed services are available.

These core functions are carried out each day through the activities of public health programs and services which promote and protect the health of people and the communities where they live, learn, work, and play.

The Ten Essential Services of Public Health (Figure 1) illustrates the relationship of the core functions and essential services that guide the interdisciplinary practice of public health.

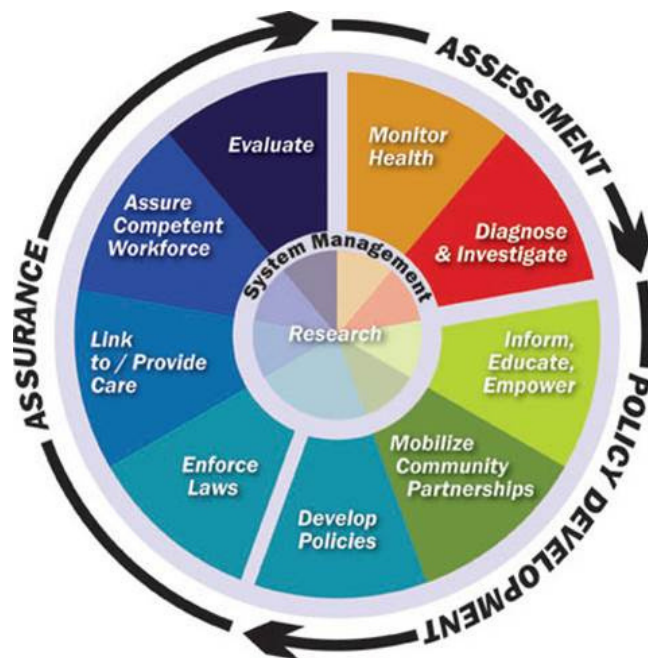


Figure 1: The 10 Essential Public Health Services

Board of Health

A Board of Health is mandated by WI Statute 250.03(1). The Board of Health is a policy making body of the Fond du Lac County Health Department. The boards' duties are established by WI Statue 251.04.

Board of Health Members

Sherry Behnke, Board of Health Chair
Marty Ryan, County Board Supervisor
Caroline Janke, County Board Supervisor
Heather Schmidt, DO
Kayla Erickson, RN
Marian Sheridan, RN
Louise Gudex
Tom Dornbrook

Medical Advisor

Heather Schmidt, DO

Membership listed as of December 31, 2022

OUR ORGANIZATION

Responsibilities of Board Members

Specific expectations of board of health members:

Assess

- Educate yourself on your community and its public health status. As a county resident, you are in an excellent position to know your community's problems and needs.
- Educate yourself on your board and local department's history, goals, achievements, and current situation.

Develop Policy

- Review statutes, administrative rules, and local policies.
- Attend board meetings regularly and promptly.
- Review all meeting materials in advance of meeting.
- Do assigned work between meetings.
- Participate fully in open, constructive dialogue regarding local public health both in and out of meetings.
- Ask critical questions; seek clarity and implications of decisions before voting.
- Function as a policy-maker not as an administrator.
- Link the community and the local health department.
- Represent a broad cross-section of the community to the board.
- Represent public health to the community.
- Speak for the board only when delegated to do so.
- Actively participate in political activities at local, state, and national level concerning local public health.

Assure

- Keep decision-making at the primary and secondary policy levels.
- Stand behind decisions of the board and its director/health officer.
- Inform the community of public health financial backing.
- Anticipate trends likely to affect the local health department.

Additional responsibilities of a president or chairperson of a board of health:

- Chair all meetings.
- Facilitate discussion and decision making.
- Work with director/health officer to set agenda for meetings.
- Counsel and consult with the director/health officer.
- Speak for the board as delegated by the board.
- Represent the board to other groups.
- Consult with board members who are not fulfilling their responsibilities or who are violating law, policy, or practice.
- Initiate annual evaluation of the board.

The chairperson of the board must exhibit leadership ability and provide direction to the director/health officer and the health department staff. How long the chairperson should serve, is best decided by the board itself. When selecting a chairperson, the board needs to look for someone who is active and concerned with the issues of the health department. The chairperson may be called on to go to county governing bodies to support health department concerns and issues. The person selected for this leadership position should be someone who has the time, energy, and savvy to work within county government to represent the concerns of the board and the health department.

OUR ORGANIZATION

Health Department Personnel

Kimberly Mueller Health Officer/Director

PUBLIC HEALTH SERVICES

Laura Berndt Public Health Services Supervisor

Amanda Cassidy	Public Health Nurse
Chantelle Cha	Public Health Nurse (Bilingual English/Hmong)
Bertha Granado	Interpreter (Bilingual English/Spanish)
Megan Herdrich	Public Health Nurse
Rachel Loduha	Public Health Nurse
Isabel Perales	Interpreter (Bilingual English/Spanish)
Michelle Robbins	Public Health Nurse/Performance Management
Julie Schmidt	Public Health Technician
Krystal Sisel	Public Health Nurse
Lisa Tollard	Public Health Nurse
Robyn Wise	Public Health Nurse

DENTAL PROGRAM

Stephanie Hopf	Oral Health Coordinator
Linda Paul	Dental Program Assistant

ENVIRONMENTAL HEALTH

Shoua Vang	Environmental Health Supervisor
Ben App	Environmental Health Specialist
Judy Birschbach	Environmental Health Technician
Mayra Castaneda	Environmental Health Specialist
Chelsea Smies	Environmental Health Specialist

OUR ORGANIZATION

WOMEN, INFANTS, & CHILDREN (WIC) PROGRAM

Kara Kerrigan	WIC Director/Registered Dietitian
Sarah Depies	Nutritionist
Marla Hemauer	Registered Dietitian/Breastfeeding Coordinator
Liliana Janoska	WIC Support Staff/Interpreter
Anna Schulz	Breastfeeding Peer Counselor

SUPPORT STAFF

Danielle Page	Office Manager
Liz Kannenberg	Administrative Assistant
Patty Mohr	Program Assistant II
Ashley Schwartz	Program Assistant II

COMMUNITY HEALTH AND PREVENTION

Sarah Gradinjan	Community Health and Prevention Supervisor
Johanna Brotz	Tobacco Prevention & Control Coordinator
Grace Dobbs	Public Health Specialist/Emergency Preparedness Coordinator
Nicole Johnson	Public Health Strategist
Laura Nakielski	Tobacco Prevention & Control Assistant
Rhianna Schmidt	Health Educator Communications Specialist
Catherine Wirkus	Release Advance Planning Coordinator

Staff listed as of December 31, 2022



Public Health
Prevent. Promote. Protect.

**Fond du Lac County
Health Department**

STRENGTHENING OUR INFRASTRUCTURE

Health Equity

Systematic health inequities contribute to poor health outcomes - in order to create social and physical environments that promote good health for all we must approach problems through a health equity lens. Social determinants of health (SDOH) are the conditions in the environments where people are born, live, learn, work, play, worship, and age that affect a wide range of health, functioning, and quality-of-life outcomes and risks (health.gov). Applying a health equity lens as we work to improve SDOH allows everyone to have a chance to thrive.



Examples of Social Determinants of Health



*Visualizing Health Equity: One Size Does Not Fit All
(Robert Wood Johnson Foundation, 2017)*

Quality Improvement/Performance Management

An overarching goal of the 2022 Quality Improvement and Performance Management plan was to continue to improve alignment of the county's performance measures with the Wisconsin (WI) State Health Improvement Plan, Fond du Lac County Community Health Improvement Plan (CHIP), and FCHD's Strategic Plan. Alignment of these plans will assure the performance management system is driven by state and local needs and that the county has organizational goals and objectives to address the public health needs of the community. In 2022, three quality improvement projects were completed. These projects included improving the response rate of those working with our Lead program, creating a survey process that could be used with our customers and partners, and finally, looking at ways to improve the efficiency of our Release Advanced Planning (jail programming).

STRENGTHENING OUR INFRASTRUCTURE

Workforce Development

Retaining public health staff during and after the COVID-19 pandemic response has become a priority of not only the Fond du Lac County Health Department, but many health departments across the state. Below are some of the activities that took place in order to retain staff.

All Staff Retreat

In 2022, an all staff retreat was planned by the Workforce Development Team. This retreat took place at the Kohler Experiential Learning Center, where Kohler staff led health department staff through 2 team-building exercises:

- GPS Odyssey; Smaller teams were tasked with navigating an unfamiliar course that ran through the village of Kohler. Teams had to not only make use of a handheld GPS device, but also rely on communication and decision-making skills as well.
- Cookin' On Fire: The health department team had to decide on roles, vision and execution plans to create a meal experience where all food was prepared by the group.



Staff Trainings

Throughout the year, there were multiple training opportunities that staff had an opportunity to attend: webinars, conferences, seminars, and more. Attending these trainings allows the Fond du Lac County Health Department staff to learn about and practice new skills which encourages increased competency among staff, and better services to the community.

STRENGTHENING OUR INFRASTRUCTURE

Sunshine Committee: Connecting to One Another

The members of the Sunshine Committee encourage employee engagement by celebrating holidays, birthdays, marriages, and more; but also offering support and sympathy to colleagues during a time of illness, bereavement, or other life events. The committee has the pleasure of coordinating and driving donation efforts where staff can give back to community-based organizations. We want to create an engaged workforce that is working towards a common goal with their colleagues and community.



Accomplishments

Community Outreach

- Donations to the Fond du Lac Humane Society
- Donations to St. Katharine Drexel Shelter/St. Vincent de Paul
- "Adopted" a local family for Christmas



Gifts for adopted family for Christmas

In House

- Employee engagement games
- Christmas in July
- Holiday Spirit



After-hours "Christmas in July" gathering



Holiday spirit

STRENGTHENING OUR INFRASTRUCTURE

Accreditation

In June 2021, the department successfully submitted all documentation to PHAB. After submission, a Pre-Site Review was completed. A Pre-Site Review is a preliminary assessment of each measure and scores them as “Fully Demonstrated”, “Largely Demonstrated”, “Slightly Demonstrated” or “Not Demonstrated”.

On January 4, 2022 we received our Pre-Site Review score. PHAB recognized 21 out of 100 measures required additional documentation. We were given 45 days to resubmit documentation. On February 8, we completed our Pre-Site Review and submitted new documentation.

In March, our Accreditation Specialist informed us of our site visit scheduled to occur April 19, 20, and 21. The Site Visitor team included our Accreditation Specialist and 2 other certified accreditation site visitors. The health department took part in a meaningful 3-day peer-reviewed process. We were asked questions regarding the department’s Community Health Assessment, Community Health and Improvement Plan, Strategic Plan as well as all of the major, Performance Management and Quality Improvement plan, Workforce Development, Communications, and Emergency Preparedness.

On May 24, 2022, we were awarded five-year national accreditation status. An announcement of our accreditation success was shared with the County Executive, Director of Administration, Board of Health and press release submitted to the media.

In July, an accreditation celebration was held in honor of all the hard work staff put into meeting the rigorous standards of PHAB.

Beginning January 2023, the health department plans to begin working on the accreditation annual report. An annual report must be completed for the next five years.



Accreditation Celebration



COVID-19 RESPONSE

Although the health department no longer operated in ICS, staff integrated COVID-19 response activities as needed into our regular day-to-day activities like we would with any other communicable disease. Additional response is outline below.

Education/Outreach

Vaccine Equity Project

Black, Indigenous, and people of color experience higher rates of infection, hospitalizations, and death from COVID-19 since the pandemic began. Furthermore, the highest disparities of vaccination rates exist in Black and Hispanic communities where they are less likely to be vaccinated compared to white residents ([WI DHS data](#)). To promote vaccine equity in the community, the health department participated in the COVID-19 vaccine equity grant project lead by United Way for a second year.

For this round of the vaccine equity project, the health department provided education and information for a vaccine ambassador program. The goal of this program was to have parents and community champions complete the program so they felt more confident answering questions about the COVID-19 vaccine in their respective communities. Participants first completed an online course provided by Johns Hopkins University titled "COVID Vaccine Ambassador Training: How to Talk to Parents". The online course was provided in English and Spanish, and we had interpreters available for Spanish-speaking individuals. Two in-person sessions were held at neutral locations with refreshments and childcare provided to encourage attendance. During the in-person sessions, a healthcare provider from SSM Health and public health nurses were in attendance to answer questions. In total, there were 7 individuals who completed the training.



Vaccine Ambassador Training Session

A second training was held in partnership with Ebony Vision, specifically for the Black population in Fond du Lac as it was expressed through conversations that they had different hesitations regarding the COVID-19 vaccines due to their historical trauma with healthcare systems. A meal was provided, and this session was more question and answer based. Again, a healthcare provider from SSM Health was in attendance to answer questions from the group.

Vaccination

The health department has continued to offer COVID-19 vaccines to all age groups (6 months and over) every Thursday in our vaccine clinic. We offer the most up-to-date vaccines and boosters as they become available and have continued to provide vaccinations to individuals who are homebound. The COVID-19 vaccine data is provided in the immunization section of the annual report.

COVID-19 RESPONSE

PPE for the Community

In February, we received 20,000 N95 respirator masks from WI DHS for distribution to the community. At the time, we had an intern that helped to coordinate a drive-thru pick up of masks at the Fond du Lac County Highway Garage. The leftover masks were placed on the first floor of the City/County Government Building for any community member to take what they needed.



Testing

Fond du Lac County Health Department has continued their contract with Accelerated Clinical Labs to provide free and accessible testing at various locations throughout Fond du Lac County. At various times throughout the year, there were short-term testing sites at Alliance Laundry Systems in Ripon (spring) and Ripon College (fall) as well as a consistent testing site at the Fond du Lac County Fairgrounds. Accelerated Clinical Labs has continued to be flexible and was able to increase the amount of days that testing is provided in the county, ending the year with four days of free testing a week.

Along with this continuous testing in the community, we received at-home rapid tests to distribute to the community. A community member that originally partnered with us for the Vaccine Equity Grant was of great assistance and delivered test kits to local libraries and service organizations like shelters, youth-serving organizations, higher education, churches, senior centers, and more. In addition to the delivery of test kits, the test kits were placed on the first floor of the City/County Government Building. This allowed us to more efficiently provide the free COVID-19 tests to our community members. In all, we distributed a total of 26,420 tests.



Contact Tracing

Contact tracing was phased out in 2022, being completely suspended by May 1st. This was in response to a Wisconsin Department of Health Services memo which provided guidance in sustainability efforts; one option was to discontinue contact tracing. In preparing for the termination of contact tracing, enhanced communication on our website was provided so our community would have access to the latest CDC guidance as it pertained to isolation and quarantine. Work for our LTE staff was phased out with advance notice so staff were able to secure jobs if they so desired.

COVID-19 RESPONSE

2022 COVID-19 Timeline of Events

DATE	ORGANIZATION	ACTION
January 5, 2022	Wisconsin Department of Health Services (DHS)	WI received the first allocation of oral antiviral COVID-19 treatments (molnupiravir and Paxlovid)
January 10, 2022	DHS	Recommends 12-15 year olds receive a single booster 5 months after receiving Pfizer or Moderna
January 17, 2022	Fond du Lac County Health Department (FCHD)	Ended school and municipality reports
January 18, 2022	DHS	All Americans are able to order free, at-home rapid COVID-19 tests online at COVIDTests.gov
January 20, 2022	FCHD	Offering pediatric Pfizer vaccine (ages 5-11)
February 11, 2022	FCHD	Added additional testing day (Fridays) at Fond du Lac County Fairgrounds
February 17, 2022	FCHD	Received order of 20,000 N95 respirator masks
February 18, 2022	DHS	First death from Multisystem Inflammatory Syndrome in Children (MIS-C) associated with COVID-19 in Wisconsin
February 25, 2022	FCHD	Held drive-thru event at Highway Garage for community agencies to pick up N95 masks
February 28, 2022	FCHD	Updated indicators for monitoring COVID-19 in communities - masks no longer recommended in low or medium community levels
March 14, 2022	DHS	Announced Thank You Tour, Moving Forward Together
March 31, 2022	DHS	DHS supports second COVID-19 vaccine booster dose for adults 50 and older and certain immunocompromised individuals
April 29, 2022	FCHD	Final COVID-19 update e-mailed to FCHD staff, County Executives Office, EM, and BOH
May 1, 2022	FCHD	Ended contact tracing
May 3, 2022	DHS	Lifesaving COVID-19 treatments (oral antiviral) widely available throughout Wisconsin
May 16, 2022	DHS	Rise in COVID-19 cases statewide
May 19, 2022	Center for Disease Control and Prevention (CDC)	Recommends single Pfizer booster dose for ages 5-11
May 20, 2022	DHS	Launched antigen test distribution program
May 23, 2022	FCHD	Ordered 1000 COVID-19 rapid test kits from the antigen test distribution program
May 23, 2022	DHS	Recommends booster to everyone age 5 and older

Continues on next page

COVID-19 RESPONSE

DATE	ORGANIZATION	ACTION
June 17, 2022	FCHD	Vaccine equity grant workgroup launches Vaccine Ambassador Program
June 18, 2022	DHS	Pediatric vaccine recommendation and expansion to children under age 5
June 27, 2022	DHS	Children 6 months to 5 years are now eligible to receive Pfizer and Moderna COVID-19 vaccines
July 6, 2022	DHS	Supports FDA authorization and CDC recommendation for COVID-19 Moderna vaccine for children and adolescents ages 6 to 17
July 13, 2022	Food and Drug Administration (FDA)	FDA grants Emergency Use Authorization (EUA) for the Novavax vaccine in adults 18 years and older
August 1, 2022	DHS	Wisconsin administered 10 million doses of COVID-19 vaccine to date
August 1, 2022	DHS	Expansion of current antigen testing support program to shelters
August 16, 2022	DHS	Updated guidance for community (schools/child care programs) - isolation and exposure guidance
August 31, 2022	CDC	CDC recommends the first updated COVID-19 bivalent vaccine for Moderna and Pfizer
September 1, 2022	DHS	DHS expands access to COVID-19 self-tests
September 12, 2022	FCHD	Expansion of COVID-19 testing to Ripon College: walk-thru testing one day a week
September 26, 2022	DHS	Community testing support program moves to antigen testing model with PCR testing available for confirmatory results
October 13, 2022	DHS	All Wisconsinites age 5 and older now eligible for updated (bivalent) COVID-19 boosters
November 2, 2022	DHS	DHS launches free telehealth service for COVID-19 treatment
November 21, 2022	FCHD	Ended COVID-19 testing at Ripon College due to low attendance
December 2, 2022	DHS	AMI Expeditionary Healthcare Services ending January 14, 2023
December 2, 2022	DHS	Bivalent vaccine recommended for pediatric ages 6 months to 5 years old
December 15, 2022	DHS	All Wisconsinites ages 6 months and older eligible for updated COVID-19 vaccine
December 29, 2022	FCHD	Discontinued Community Impact Dashboard

PROGRAMS - PUBLIC HEALTH SERVICES

Communicable Disease Control & Prevention

Wisconsin state law requires the reporting of communicable diseases to local public health agencies by healthcare providers, hospitals, and labs. The Health Department has continued enhanced surveillance for Hepatitis C and HIV through outreach to high risk individuals, primarily among jail inmates.

	2020	2021	2022
Emerging Diseases			
COVID-19	10403	10782	14372
Food/Water Borne Illness			
Campylobacter	2	21	18
Cryptosporidium	0	6	6
E. Coli	0	13	16
Giardia	2	6	8
Salmonella	4	14	24
Vaccine Preventable (except Hepatitis C)			
Pertussis	0	0	0
Hepatitis A	0	0	0
Hepatitis B	0	2	5
Hepatitis C	11	18	33
Tuberculosis			
Latent Disease	1	13	15
Active Disease	0	0	1
Other Diseases			
HIV	2	4	6
Invasive Strep Pneumonia	3	5	7

Contact Tracing Events

Contact tracing was phased out and ended completely on May 1st, 2022.

Continued partnership with assisted living facilities to report outbreaks and ensure access to testing and quarantine guidelines

Collected and reported COVID-19 data to the public through the Community Impact Dashboard

PROGRAMS - PUBLIC HEALTH SERVICES

HIV Testing & Partner Services

FCHD is a designated Human Immunodeficiency Virus (HIV) counseling, testing, and referral site (CTR). Free HIV test kits are provided by the Wisconsin Division of Public Health AIDS program. We offer rapid tests with results in 20 minutes for individuals at risk for HIV. Positive tests are referred to HIV medical services known as Vivent Health for case management and risk reduction intervention.

Fond du Lac County contracts as a lead agency for HIV partner services (PS) with referrals from the Wisconsin HIV Partner Services Program. FCHD is reimbursed by case initiation and hourly rates for a multi-jurisdiction area covering Fond du Lac, Green Lake, and Calumet counties.

Referrals are received on newly infected persons with HIV and on HIV clients who have recently moved into Wisconsin, to assist with medical resources, notification, and testing of sexual and needle sharing partners.

HIV Tests Completed

2020	2021	2022
13	27	98

Vision and Hearing Screening in Schools

All public and parochial Fond du Lac County Schools receive a visit from FCHD to provide a yearly vision and hearing screening (outlined in the tables below), equating to 379 hours of work with K-12 students. The Fond du Lac County Health Department has a strong collaboration with Moraine Park Technical College Nursing Program; students from Fond du Lac, Beaver Dam, and West Bend campuses assist with the hearing and vision screenings.



SPOT Vision Camera

The St. Peter Lion's Club has a SPOT Vision Camera that they allow FCHD to use to better catch vision problems early; our staff focuses on 3, 4, and 5 year old children with this camera. The SPOT Vision Camera provides a reliable, objective assessment and instantly detects the indication of 6 major issues: hyperopia (farsightedness), myopia (nearsightedness), astigmatism (blurred vision), anisometropia (unequal refractive power), gaze (eye alignment measurement), and anisocoria (unequal pupil size). The Spot Vision Screener's unique binocular screening for amblyopic precursors (anisometropia/eye misalignment) makes it the ideal tool for early intervention programs for special needs, pre-verbal, and pre-school children.

Vision Screenings Completed

2021	2022
6483	7130
Referrals: 467	Referrals: 449

Hearing Screenings Completed

2021	2022
3962	4140
Referrals: 12	Referrals: 31

PROGRAMS - PUBLIC HEALTH SERVICES

Immunizations for Children & Adults

Goal: To provide county residents with information needed about the recommended vaccines for their age group and personal risk factors.

Immunizations are one of the most important public health victories – defeating or sharply reducing diseases such as smallpox, polio, measles, diphtheria, rubella, pertussis (whooping cough), and others. However, many organisms that cause these diseases have not been eradicated, and they can reemerge if vaccination levels drop. FCHD Immunization Team continued in-house vaccination services with scheduled clinics by appointment for childhood, adult, and COVID-19 vaccinations.

In-House Immunization Clinic Statistics

(does not include influenza vaccine numbers)

Non-COVID Vaccinations	2020	May-Dec 2021	2022
Children 0-18			
Immunizations	164	319	670
Clients	58	113	307
Adults 19+			
Immunizations	75	100	248
Clients	67	78	198
Total			
Immunizations	239	419	918
Clients	125	119	505

COVID-19 Vaccinations 2022

2021 Total Doses	1371
Primary Doses	
Janssen 18+	60
Moderna 12+	305
Pfizer 6mo-4yr	34
Pfizer 5-11yr	75
Pfizer 12yr+	331
Booster Doses	
Pfizer 5-11yr bivalent	4
Pfizer 12+ bivalent	151
Moderna 12+ bivalent	72
2022 Total	1058

Data collected from Wisconsin Immunization Registry (WIR) Vaccine Usage Report, manual consent counts, and health department immunization appointment schedule.

Note: Annual review of county and State school age immunization rates and compliance found at <https://www.dhs.wisconsin.gov/immunization/data.htm>

PROGRAMS - PUBLIC HEALTH SERVICES

74%

Fond du Lac County met the objective of having 74% of two-year-olds receiving all their immunizations

146

Fond du Lac County employees received their influenza vaccine thanks to collaboration with the Fond du Lac County Wellness Committee

12

eligible individuals received the Jynneos vaccine during the 2022 mpox outbreak

Influenza Vaccines 2022

Injectable and Flu-Mist vaccines were available for Vaccines for Children and school-based clinics

School Based Immunization Clinics	
1st dose (in schools 11/7/22-11/10/22)	1467
2nd dose (in schools 12/12/22-12/13/22)	27
Health Department Immunization Clinics	
provided between 1/1/22-12/31/22	103
Total	1597

There is a growing national trend of parents choosing not to have their children vaccinated. We continue to monitor childhood immunization rates carefully and work closely with our local health providers and schools to improve immunization rates in Fond du Lac County.

The Health Department continues to participate in regional immunization coalition activities through the Northeast Wisconsin Immunization Coalition (NEWIC), which focuses on advocacy, provider education, and population based approaches. In the fall of 2022, a statewide immunization coalition was launched; Immunize Wisconsin. Their goal is to reduce vaccine-preventable diseases through education and providing statewide support working with community, local, and regional coalitions. The Health Department looks forward to collaborating with Immunize Wisconsin initiatives to increase vaccination uptake in Wisconsin.

Loan Closet

Supportive durable medical equipment, such as walkers, wheelchairs, commodes, and bath benches, is recommended for many individuals' safety and provided on a temporary basis at no cost to Fond du Lac County Residents.



126

individuals were loaned medical equipment this year

PROGRAMS - PUBLIC HEALTH SERVICES

Maternal Child Health (MCH)

Goal: Improve birth outcomes and strengthen at risk families.

Strategies and activities:

- Offer and provide home visits through Prenatal Care Coordination (PNCC), a Medicaid benefit that assists eligible pregnant women to gain access to medical, social and education services.
- Offer and provide home visits to women and infants in the postpartum period, providing education and community resources.
- Provide breastfeeding support.
- Collaborate with community partners and coalitions which support the health of and strengthening of young families.
- Participate in MCH grant objectives that address Title V National Performance measures, specifically in the areas of Health Equity and Breastfeeding.

Partnerships/Accomplishments:

- INSPIRE coalition (FDL School District grant) partners with Parent Life and provides a weekly teen group, reaching 10-20 pregnant or parenting teens each week.
- St. Vincent De Paul - providing pack n plays and safe sleep education to families in need.
- SPROUT (Supporting Positive Relationships so Our children Under 6 can Thrive) which strengthens the community's ability to support social/emotional health of young children (in the context of family, culture, education, and community). Planned SPROUT's quarterly Parent Café sessions.
- First Breath (smoking cessation program for pregnant women) offered to all pregnant women who smoke. MCH and partners (Save a Smile, WIC, and Bethany Christian Adoption Services) are also First Breath providers.
- Child Death Review (CDR) team, coordinated by MCH meets quarterly to review child deaths, identify risk factors, and make preventive recommendations.

Initiatives:

MCH nurses chose two objectives from the state to work on this year: breastfeeding and developmental screening. The developmental screening initiative was worked on with the SPROUT coalition. A MCH nurse attended five Parent Cafes throughout the year and included developmental screening at the events. We also utilized ASQ (ages and stages questionnaires) developmental screenings at home visits with families. Through the breastfeeding initiative, an MCH nurse was able to recertify three childcare centers in Fond du Lac County to be recognized as a breastfeeding friendly business. The MCH team has two certified lactation consultants who also assisted moms at PNCC/MCH visits.

2022 Statistics:

268

PNCC referrals
received

353

One-on-One visits
(344 were billable)

42

Pregnancy tests
completed

30

Postpartum referrals
received

PROGRAMS - PUBLIC HEALTH SERVICES

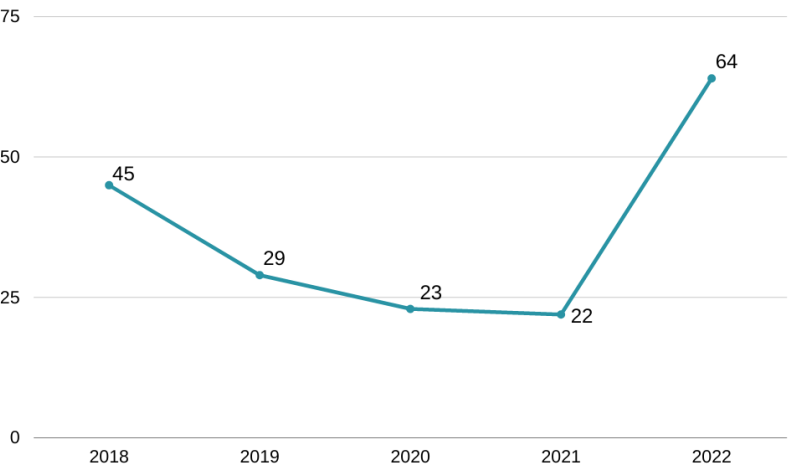
Childhood Lead Testing

Goal: Prevent childhood lead poisoning by reducing and eliminating environmental lead exposure.

Lead hazards still exist in many homes in Fond du Lac County built before 1978. Even low levels of lead can cause lasting effects on a child including medical, behavioral and learning problems. Children from birth through age 6 are most at risk for lead poisoning because their bodies absorb the most lead. The CDC lowered the lead reference value to 3.5mcg/dL at the end of 2021. This change helps us to address potential lead hazards sooner. As you can see in the charts below, we had significantly higher numbers of elevated blood lead levels in 2022. However, we are catching these kids at lower levels than before which will in turn help to prevent the irreversible damage from the lead they are being exposed to.

The Health Department offers a free home visit to any child with a lead level of 3.5 or higher. At this visit, the lead nurse determines possible sources of lead in the home and provides education on how to decrease the child’s lead exposure. The Health Department has cleaning kits available for families along with a HEPA certified vacuum that can be rented out.

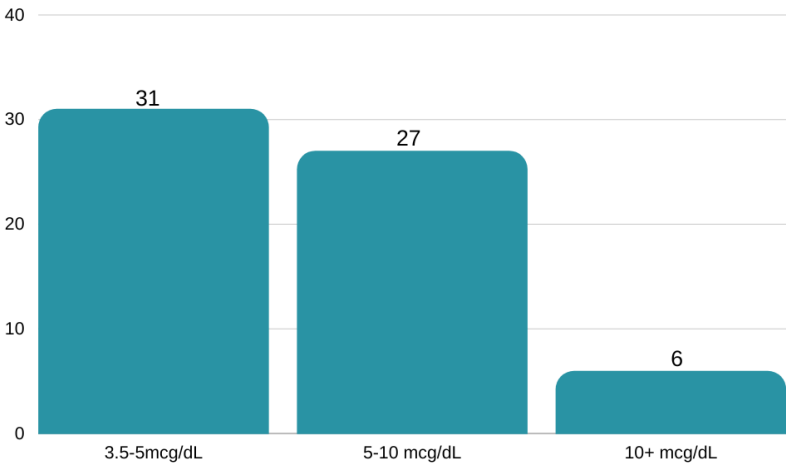
Number of New Lead Cases



Note: The blood lead reference value decreased to 3.5 mcg/dL from 5 mcg/dL at the end of 2021

Blood Lead Levels for 2022

*bars represent number of tests at each level



PROGRAMS - PUBLIC HEALTH SERVICES

Sexual Health Clinic

Goal: Provide ease of testing and treatment of chlamydia and gonorrhea to county residents regardless of insurance status or income level.

Strategies and activities:

- Offer appointments for testing of chlamydia and gonorrhea.
- Collaborate with the WI state lab of hygiene to complete testing of samples.
- Provide treatment using standing orders for positive results.
- Collaborate with community partners to provide information to clients regarding the Health Departments Sexually Transmitted Infection (STI) clinic testing and treatment options.
- Provide affordable access to testing and treatment of chlamydia and gonorrhea based off of client's insurance and income.

189 clients were seen at the clinic in 2022

Of the 189 individuals seen at the clinic, 138 were tested for chlamydia and gonorrhea. Those that were seen but **not** tested had either:

- Already tested positive and needed financial assistance for treatment or
- Had a partner(s) test positive and needed treatment because they didn't have a provider or needed financial assistance for treatment.

A total of 60 clients were treated at the clinic in 2022.

An MCH/Public Health Nurse has the lead role in Sexually Transmitted Infections (STI) surveillance and follow up. The nurse also has the lead role in facilitating and maintaining the STI Clinic at FCHD.

Fond du Lac County STI Statistics

Sexually Transmitted Infections (STI)	2019	2020	2021	2022
Chlamydia	383	81	367	323
Gonorrhea	66	17	97	95

PROGRAMS - PUBLIC HEALTH SERVICES

Save a Smile

Goal - Increase dental care access and improve the oral health of our community through unique, innovative, community-driven partnerships and collaborations.

The Need:

Wisconsin Medical Assistance (MA) provides basic dental benefits to children and adults eligible for Medicaid/Badger Care. Fond du Lac County only has 1 provider who is actively accepting MA patients and that office is only open on Saturdays and prefers to see ages 12 and older. In any given month, Fond du Lac County currently has 8,000 children and 8,000 adults eligible for MA. After identifying this major gap in access to dental care, Fond du Lac County began to prioritize the oral health concerns of its residents.

The Solution: Save a Smile (SAS) Children's Dental Program

In September 2007, the SAS program began providing access to dental care for Fond du Lac County children covered by MA. This unique public/private partnership between Fond du Lac County Health Department and contracted local dental providers supports the existing dental provision system by eliminating barriers (high no-show rates, inadequate reimbursement, and burdensome billing) which prevented dentist participation and allows for maximum MA reimbursement. SAS provides access to ongoing preventive and restorative dental care to eligible patients 18 years and younger. Contracted local dentists provide expert dental treatment in their private offices.

New leadership for the SAS program began in January. One of the biggest projects was to undertake a cleanup project to find out exactly how many children were actively participating at each office. The cleanup project made many children inactive who were not currently seeking care or had not been in the last 3 years. The number of enrolled children is lower than in the past, but this allowed the program the opportunity to start actively enrolling children. The last opportunity to enroll, regardless of need, was back in 2010. So although the number of children enrolled is currently lower than in the past, it has allowed the providers the opportunity to get these children the full dental care that they required.

Another challenge is that many local dentists left the community during the COVID-19 pandemic or retired so the number of dental offices that are currently participating is less than in years past. The offices that are providing care have become crucial to Fond du Lac community and SAS.

Save a Smile created a Dental Access Group that took an in depth look into both the children's and adult programs. One of the key findings was that the local dental providers want to focus more on helping the children of the community.

Fact: 1 in 3 Wisconsin children are living with untreated dental decay, which is the most preventable chronic disease in the United States.

PROGRAMS - PUBLIC HEALTH SERVICES

Adult SAS Dental Program

During 2022, the Adult SAS program has been paused due to being short staffed and dental offices not having openings. Only the most significant urgent cases received treatment. The Save a Smile staff along with the community partners are exploring new ideas for 2023 to see how to utilize these funds to bring access to care back to the adult residents of Fond du Lac County.

SAS Fluoride Varnish Program

Eligible children receive oral health assessments, education, and a topical fluoride varnish application by a SAS Registered Dental Hygienist. We have continued the partnership with Head Start and the Campbellsport School District. The children all receive a score. Those children identified with urgent needs are assisted by SAS to receive treatment, if they qualify for assistance.

Children aged 5 to 19 years from low-income families are twice as likely to have cavities, compared with children from higher-income households.

[cdc.gov](https://www.cdc.gov)

Children Assisted	2020	2021	2022
	537	606	463
Children Enrolled			
Office Visits	552	667	780

Adults Assisted	2020	2021	2022
	154	172	52
Adults Enrolled			
Office Visits	214	200	65

Essential Save A Smile Partners - Thank you!



Fond du Lac County
Medical Assistance Reimbursement
SSM Healthcare
Fond du Lac Area Foundation
Fond du Lac Area United Way
Contracted Local Dental Providers
Local donations

PROGRAMS - WIC

Goal: Improve the nutritional status of low-income pregnant women and children under the age of 5 to foster healthy families.



WIC is a Special Supplemental Nutrition Program for Women, Infants, and Children (WIC), providing nutrition, education, nutritious foods, breastfeeding support and community referrals for income eligible families.

2022 WIC Highlights

2,286

individuals were served,
averaging a caseload of 1,458
active participants per month.

\$997,455

The amount of WIC vouchers used across 13 Fond du Lac County grocery stores and pharmacies.

Note: this number is much higher than last year as:

- Many families are struggling with the increased cost of food
- Fond du Lac County WIC is serving significantly more families than last year

160

pregnant, high-risk women were
referred to the Prenatal Care
Coordination Program.

1,102

referrals were made for
participants to other agencies

\$10,074

was spent at farmers markets
and farm stands.

In efforts to help WIC retention:

- An online application available in both English and Spanish, continues to be available. In 2022, 61 families used this method to apply for the program.
- Continued to attend community meetings via Zoom in representation of WIC.
- Collaborated with Creative Marketing Services to increase media presence and increase caseload, along with Well Badger to receive referrals. Between the two sources, there were 113 families who applied in 2022
- Began partnering with 7 of the 9 HMOs that serve Fond du Lac County. We conduct outreach on a monthly basis to reach potentially eligible participants.

PROGRAMS - WIC

COVID-19 Impact

COVID-19 continues to greatly influence our program. In 2022, we offered a hybrid model of services. Participants were offered the choice to complete their appointments remotely or in person. A vast majority of participants chose remote options (unless new to WIC or needing breastfeeding support). Participant satisfaction surveys showed that participants were satisfied with this mode of services. Post-pandemic we need to be thoughtful and mindful of creating options and making all options accessible for families. It is highly likely that some sort of hybrid model will be continued at the federal level so that we can reach families no matter what circumstance they are coming from.

Formula Recall Impact

Similac formula was recalled in February 2022. Fond du Lac County WIC quickly devised a plan to ensure that formula fed infants in the County were still fed. ARPA funds were used to purchase alternative brands of formula for families until the State WIC office was able to add in these alternative types of formulas for families to be able to purchase. For the remainder of 2022 the WIC program allowed for substitute formulas and can sizes while formula stock was being replenished in the marketplace.

Breastfeeding and Peer Counseling Program

Goal: All women both pregnant and breastfeeding will receive breastfeeding education and support to achieve their breastfeeding goals.

The WIC Program continues to work diligently to promote and support breastfeeding. Annually, WIC Certified Lactation Counselors attend the Wisconsin Association of Lactation Consultants conference in Oshkosh, WI. World Breastfeeding Week was August 1st - 7th. The Fond du Lac County Health Department hosted an in person breastfeeding celebration this year. Our partners at SSM were able to be in attendance as well.



FCHD staff that assisted with the breastfeeding celebration



SSM Health staff at the event

PROGRAMS - WIC

Successes of the Breastfeeding & Peer Counseling Program

WIC remains committed to improving breastfeeding rates by continuing to provide accurate, informative, and supportive breastfeeding education. WIC employs one-part time employee who spent 15 hours per week as peer and 7.5 hours per week as support staff. By having our peer in the office 3 days of the week, it allowed moms more availability to meet her and build rapport.

The Breastfeeding Peer Counselor provides mom-to-mom support through phone calls, FaceTime/Zoom, text messages, and in office support. The peer counselor is available nights and weekends so women have support when they need it. All pregnant and breastfeeding women receive contact from a breastfeeding peer counselor throughout their pregnancy as well as through their entire breastfeeding experience no matter the duration or amount of breastmilk provided. The peer sent 6- and 12-month certificates to all breastfeeding moms (in all languages) who achieved that milestone.

2022 Accomplishments:

78% of WIC moms initiated breastfeeding this is a **10% increase** from 2021!

44% of infants received breastmilk until at least 6 months of age - a **13% increase** from 2021!

32% of WIC infants are exclusively breastfed at 3 months of age; well above the state average of 26%

GREAT JOB, MOMS!

Challenges of the Breastfeeding & Peer Counseling Program

In 2022, the biggest barrier to providing Peer services continues to be the pandemic, COVID-19. Throughout the entire year, our office offered all prenatal and breastfeeding appointments the option to come in or complete the appointment by phone. Many appointments chose a phone appointment despite the need for lactation education and services. Barriers of transportation, weather, etc., continue to be present which affects the families' ability to make the appointment in person. This greatly affected the peer's ability to provide hands on, face to face, support.

Cultural differences and practices continue to be a barrier for all WIC CPA's and the breastfeeding peer counselor. The peer counselor needs to use translation/interpreter services to effectively communicate with mothers and at times, can be a barrier. We continue to work with exploring ways to increase participation and make aware that WIC is a safe place to discuss breastfeeding, pregnancy, and other nutrition related topics.

Managing a peer takes time for both the Director and BF Peer Coordinator. The Breastfeeding Peer Coordinator serves as a mentor for the peer's professional growth in addition to teaching them to support breastfeeding women.

PROGRAMS - WIC

Plans for Next Year

Anna will continue to work 15 hours per week with 2 days being in the office. In 2022, Anna gained confidence in her role and continued to find new ways to educate and meet mothers where they are at. We hope to continue to offer services however works best for the mother; whether that is in person or by phone. WIC will continue to schedule all pregnant mothers interested in learning more about breastfeeding in a separate “Peer” column that is designated only for Anna. Scheduling this way allows for more individualized, in depth, breastfeeding education between peer and participant.

The Breastfeeding Coordinator and Peer will continue to have monthly staff meetings to allow for continued support, education and mentoring. Time has been blocked off in the WIC clinic schedule to ensure these meetings occur and BFPC and BFP have adequate time for various activities and tasks to be completed.

Infant at Work Pilot Program

This year we had the opportunity to trial our WIC infant at work policy. Fond du Lac County WIC strives for a positive work environment that recognizes parents’ responsibilities to their jobs and to their infants by acknowledging that, when an infant is able to stay with a parent, this benefits the family, employer, and society.

When Lili, who met all of the eligibility criteria, returned to work she expressed interest in trialing this program with her baby Luna. The program allowed for Luna to accompany Lili to work on certain days of the week. Luna had two formalized alternate care providers on staff who would assist with her care if needed and within certain parameters. Lili was able to successfully care for her baby while still efficiently completing all of her assigned job duties.

There was an added value in that having her baby at work helped her to be successful in her own breastfeeding journey, helped to normalize breastfeeding, provided a vicarious breastfeeding experience for the families that we serve and increased the overall morale of the office and our team. We are so proud of Lili and Luna and are happy to be working to change the return to work culture and the definition of what it means to be a working lactating parent.



PROGRAMS - FIT FAMILIES

Fit Families

Goal: Fit Families Supplemental Nutrition Assistance Program-Education (SNAP-Ed) is a successful behavior change program targeting primarily families of 2 to 4-year-old children enrolled in WIC at Fit Families projects in Wisconsin.



fit families

Eat healthy • Be active • Your kids are watching

Core Messages

Move More...Watch Less

Encourage Fit Families participants to engage in active play or physical activity for at least 60 minutes every day and to reduce screen time to two hours or less each day.

Make Every Bite Count...More Fruits and Vegetables

Encourage children and their parents to eat the recommended amount of fruits and vegetables each day.

Make Every Sip Count...More Healthy Beverages

Encourage families to reduce or eliminate use of sugared beverages.

Over-Arching Message

Eat Healthy, Be Active: Your Kids are Watching

Encourage parents to be good role models for their children.

Components

Fit Families engages three components to build a strong environment for families:

- The **Family Component** is directed at families with children age 2 to 4 years. Families enroll and work with a Fit Families Coach to set wellness goals.
 - 38 out of 40 families completed the 12-month program
 - 24 Non-Hispanic participants and 16 Hispanic participants
- The **Organization Component** is directed at Fit Families Centers. The Centers are the organizations offering the Fit Families Program.
 - Fit Families wellness policy remains in place for Fond du Lac WIC Staff
 - A "Take the Stairs" challenge was offered to all Health Department Staff in July
- The **Community Partnerships Component** reinforces Fit Families health messages and helps to promote and protect the health of all children in participating communities.
 - These partnerships from 2021 were continued in 2022:
 - Downtown Fond du Lac Partnership
 - FoodWise
 - Fond du Lac WIC/Health Department

PROGRAMS - ENVIRONMENTAL HEALTH

Goal: The Environmental Health program will continue to make strides to improve, promote and protect the air we breathe, water we drink, food we eat, places we play and the communities we live for the health of Fond du Lac County residents

Human Health Hazards and Public Nuisances/Complaints

The Fond du Lac County Health Department Environmental Health (EH) program is the primary response for Human Health Hazards and Public Nuisance/Complaints. In response to a complaint or concern, staff gather information to determine the appropriate steps to proceed. Responses can include education and resources such as handouts, websites, and contacts. Staff also make referrals to local and state agencies, police or fire departments or make contact on their behalf to agencies, property managers, medical providers or care providers.

During 2022, there were approximately 136 contacts with the EH staff that included calls, emails or visits to the department requesting assistance with a public health nuisance and/or complaint. The majority of complaints were in regard to maintenance of rental property - approximately 20%.

Childhood Lead Poisoning Prevention

This program focuses on lead paint hazards in homes and identifying them through a lead risk assessment. Lead Risk Assessments (LRA) are required when an elevated blood lead level (EBLs) of greater than 15mg/dl are detected in a child under 5 years of age.

Referrals for this program come from the Public Health Nurse who manages these cases from a medical perspective. The EH team works directly with these families from an environmental perspective to educate, inform and identify lead hazards within the home. These hazards are commonly found in paint but have been identified in water, soil, toys, pottery, jewelry, or from cultural practices.

One Lead Risk Assessment for the Lead Safe Homes Program with DHS was completed in 2022 and two homes had clearance inspections completed meeting the requirements for abatement of lead paint hazards.

Lead Risk Assessments Completed

2020	2021	2022
1	1	1

PROGRAMS - ENVIRONMENTAL HEALTH

Water Quality

Water Lab

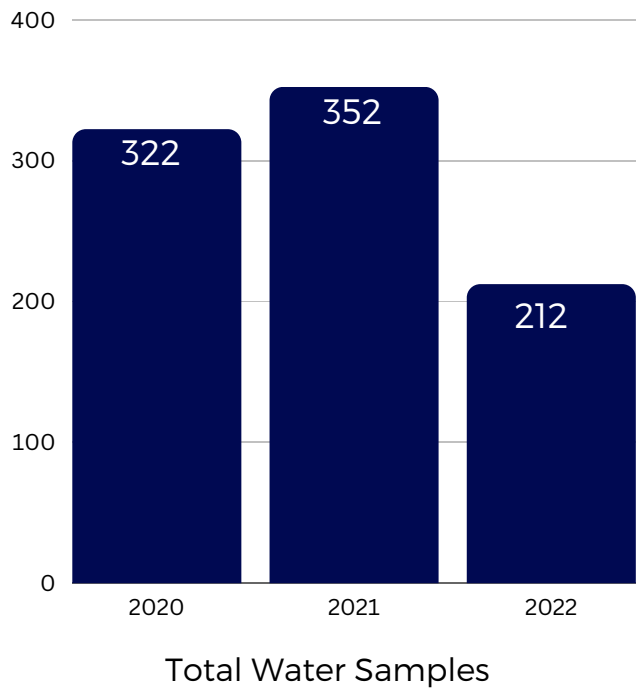
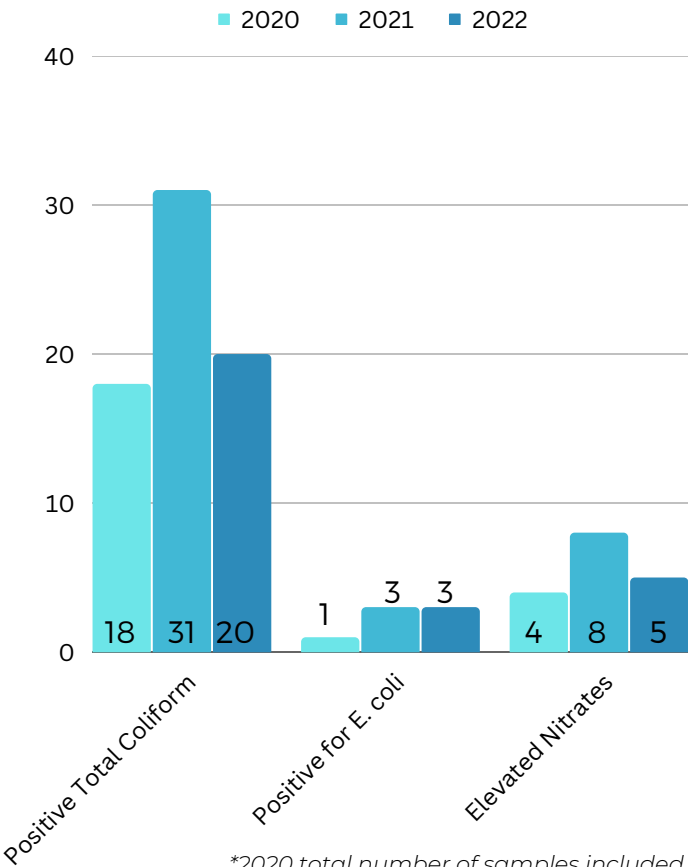
The Water Lab continues to be productive and active to accommodate additional sampling. The lab is comprised of three different water testing programs: Private Water, Municipal Water, and DNR Transient Non-Community (TNC) Water. In 2022, the lab processed a total of 1266 bacteria, nitrate and nitrite samples between our Private, Municipal, and DNR TNC Programs.

The lab has capability to do total bacterial counts, this is called the most probable number (MPN's) in contrast to presence absence testing of coliform and E. coli. MPN's are used in beach monitoring, and DNR Programs. In 2022, we conducted 3 counts for the DNR program. MPN's can also be completed for private wells or a municipality, if requested.

Private Well Water Sampling

There were a total of 212 samples analyzed in 2022. There were 122 bacteria samples and 90 nitrate samples. Of these 212 samples, 20 were total coliform positive, 3 were positive for E. coli, and 5 had elevated nitrates.

Private Water Sample Totals
2020-2022

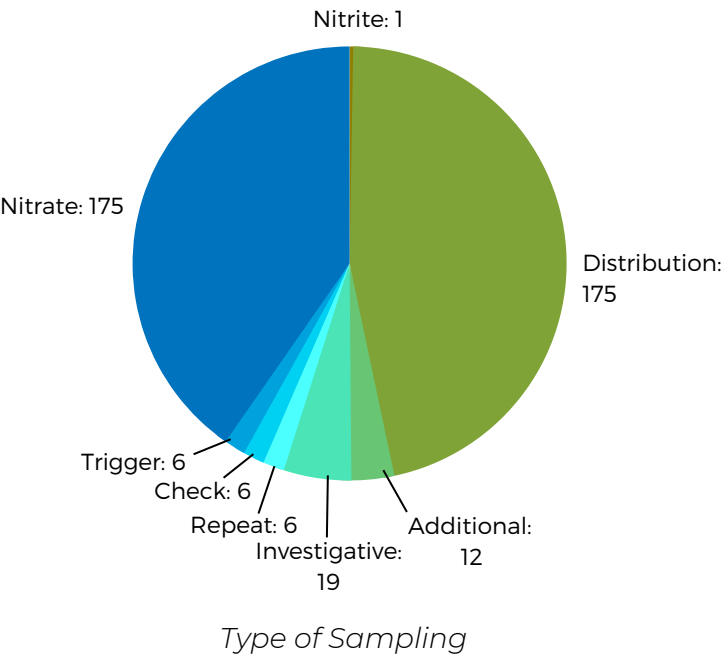
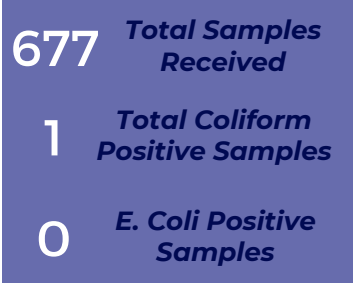


*2020 total number of samples included Municipal Water Samples, 2021 recorded separately.

PROGRAMS - ENVIRONMENTAL HEALTH

Municipal Drinking Water Program

The lab currently analyzes water samples only for the City of Fond du Lac unless other municipalities reach out with a need for the service. We analyzed a total of 677 bacteria samples for Total coliform and E. coli, with one of these samples testing positive for Total Coliform and zero positive for E. coli.



DNR Well Water Program

The DNR Program was again an active program, with 377 samples taken for bacteria and nitrates. A total of 151 public well water systems identified by the DNR as wells serving the public were sampled. There were two systems with bacterial contamination. Due to the contamination, staff are required to complete additional sampling to identify the presence of bacteria that is referred to as investigative, trigger, repeat, check and additional samples.

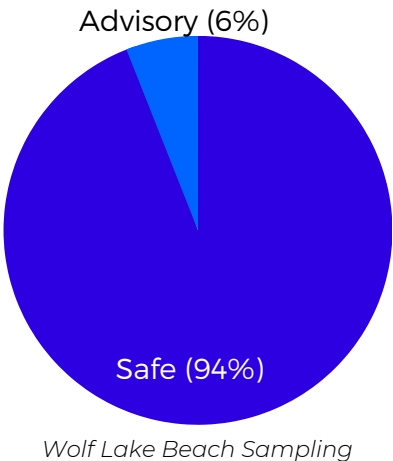
There were 8 systems with increased monitoring for monthly or quarterly bacteria sampling due to new system start up, and one system going into 2023 remaining unsafe. There were no systems with elevated nitrates in 2022.

Beach Water Monitoring

From Memorial Day to Labor day, Wolf Lake Beach was sampled and evaluated for water quality. Factors that affect water quality include weather, including precipitation, wind and temperature that affect beach water quality as well as animal and human activities.

Beach samples are evaluated for E. coli organisms, which is an indicator organism that identifies if there are germs in the water that can make people sick. Levels for safe water quality limits at recreational water sites are determined by the federal BEACH Act. If these levels are above the safety limits the beach is placed under an advisory or closure.

This season did not have any closures. There was one advisory for the season. The Health Department worked with Land Information to assure the public was aware of the advisory through postings on both websites and social media messaging. Results are reported weekly to the DNR and posted on the Beach Health Website and sent to partners via email weekly.



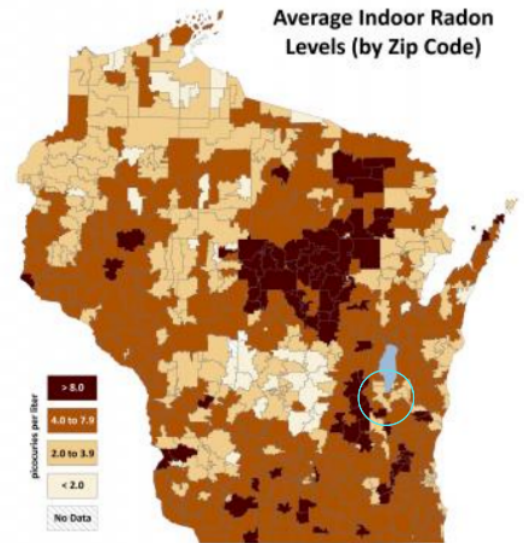
PROGRAMS - ENVIRONMENTAL HEALTH

East Central Radon Information Center

Fond du Lac County Health Department serves as a Radon Information Center (RIC) for Winnebago, Outagamie, Sheboygan, and Fond du Lac County residents. Homeowners are encouraged to test their homes for radon an odorless, tasteless, invisible gas produced by the decay of naturally occurring uranium in soil and water. According to the Department of Health Services (DHS), Fond du Lac County is an area that has a majority of homes that test with elevated levels of radon, between 2.0-7.9 pCi/L.

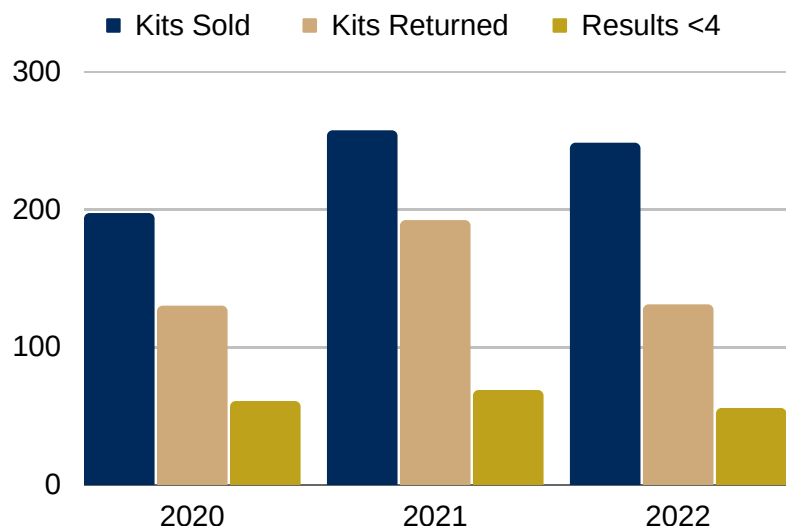
Radon short and long term test kits can be purchased at the Health Department and other locations throughout the county:

- Brandon Village Hall
- Fairwater Village Hall
- Mt. Calvary Village Hall
- North Fond du Lac Village Hall
- Ripon City Hall
- Ripon Town Hall
- Village of Oakfield



A total of 240 short-term test kits and 8 long-term test kits were provided to homeowners. Out of the 248 total kits, 131 kits were completed and analyzed by Alpha Energy Labs. The results of the analyzed kits showed; 56 kits, equaling 43%, of the tests performed had high radon levels equal to or greater than 4 pCi/L. All completed test results are reported to the FCHD. Kits with reported elevated levels received follow up letters and half off coupons. Test kits that have not been analyzed received a reminder postcards to test their home.

Radon outreach and education for 2022 included a collaboration with the Fondy Food Pantry offering free short-term radon test kits in exchange for a non-perishable food item. A total of 53 radon kits were given out during this event. During Radon Action Month, our RIC offered half off short-term test kits, shared 23 posts on social media, and developed a radon billboard that was displayed on HWY 41. Staff responded to 32 phone calls and 43 e-mails regarding radon.

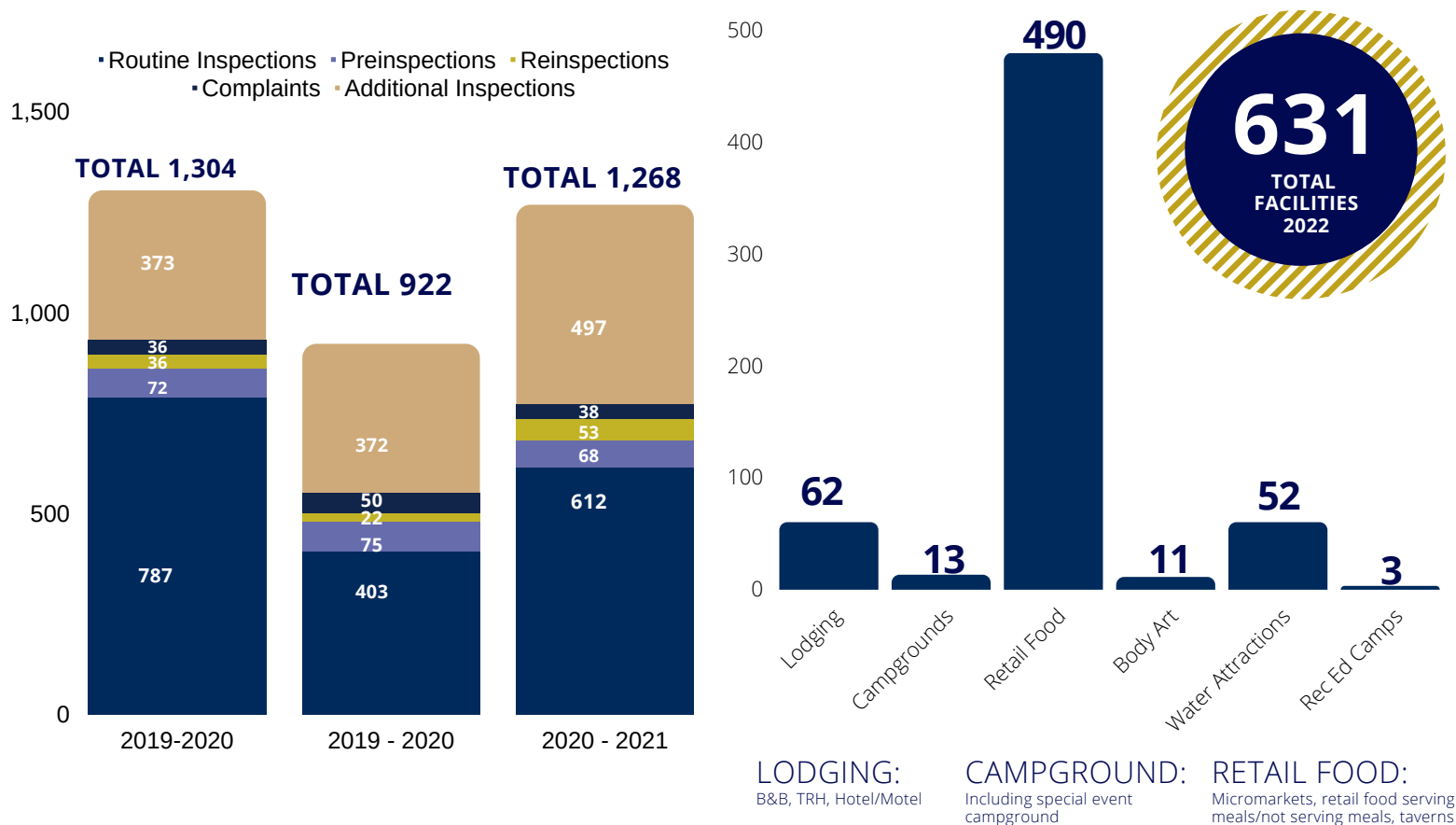


PROGRAMS - ENVIRONMENTAL HEALTH

Food Safety and Recreational Licensing Program

As an agent for the Wisconsin Department of Agriculture and Department of Safety (DATCP) and Professional Services and the Department of Safety and Professional Services (DSPS), the EH Program is responsible for ensuring safe practices and protecting consumers. In order to accomplish this, unannounced inspections are conducted at a variety of facilities including: restaurants, food stands, meat markets, hospitals, school cafeterias, mobile food units and pushcarts, summer camps, bed & breakfast, and other lodging facilities. Environmental Health Specialists work to ensure compliance with all sanitation laws through routine inspections, education, new facility plan review, and complaint investigations.

In 2022, there was a total of 631 licensed facilities, not including approximately 48 transient establishments, and 42 DPI schools. The majority of the licensed facilities are Retail Food Establishments, at 78%. The total number of inspections, of all types, completed for this year was 1,268. In contrast, from 2020-2021, where the inspection totals were at 922.

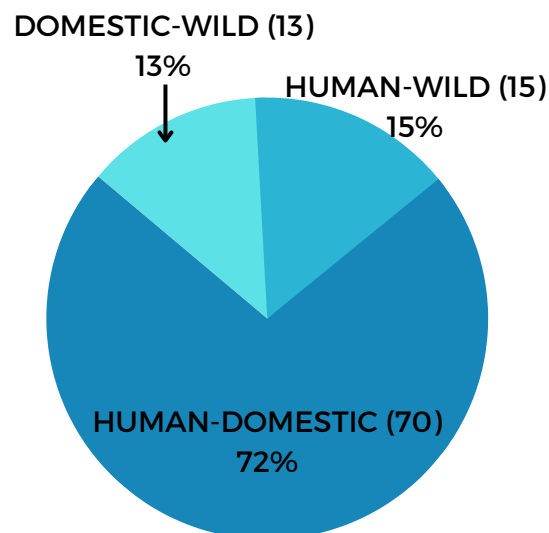


PROGRAMS - ENVIRONMENTAL HEALTH

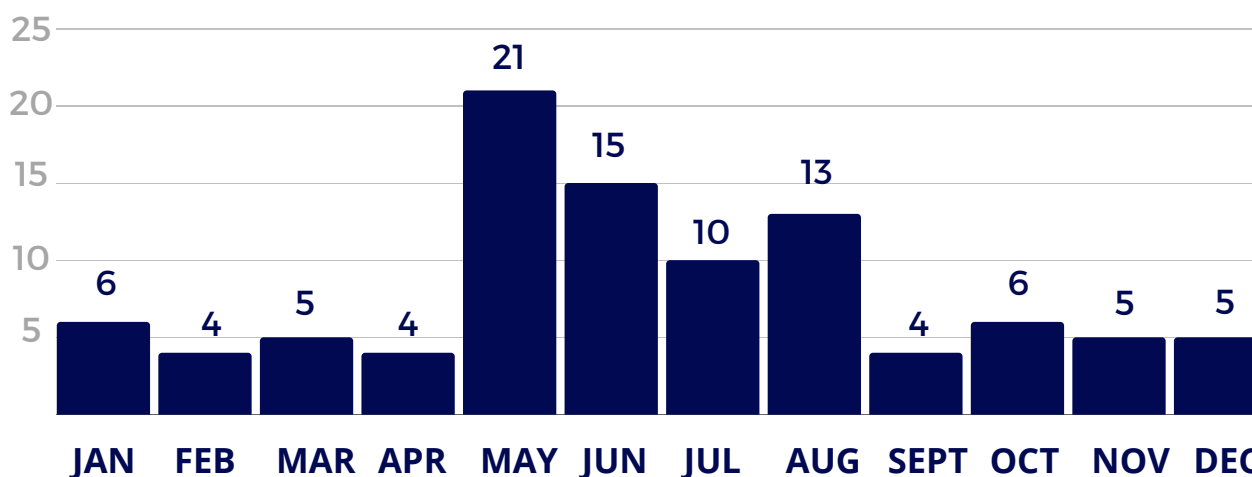
Rabies Prevention and Control

A total of 98 cases were reported. The most frequent category of cases reported are domestic-human exposure. These types are primarily handled by law enforcement but the EH program does provide patient education to both the victim and owner of the animal when information is provided. These incidences typically involve a pet dog or cat that has bitten a family member, close friend, or stranger. Human-wild exposures are the second most prevalent type of exposure cases where individuals are exposed to a bat, a raccoon, or other wild animal. In these cases, the EH program would write quarantine orders. This exposure resulting in animal submission to the WI State Lab of Hygiene for rabies testing.

TYPES OF EXPOSURE



2022 Monthly Case Breakdown



Environmental Health staff partnered with the Fond du Lac Humane Society in the days surrounding World Rabies Day, on September 28th, 2022. This partnership included educational social media posts and videos. Together, they provided rabies pamphlets along with cat or dog treat bags for pet owners.



COMMUNITY HEALTH AND PREVENTION

Tobacco Prevention and Control

Goal: Creating nicotine and tobacco-free environments in which we live, learn, work, and play while promoting healthy lifestyles through education, advocacy, policy, and helping people quit tobacco.

Tobacco Prevention Program Sustainability

In 2022, the Tobacco Prevention and Control program experienced some changes:

- Five Counties for Tobacco Free Living officially changed their name to East Central Alliance for Nicotine Prevention. The coalition decided to use nicotine in their name over tobacco to be all-encompassing of any nicotine product.
- The coalition welcomed a new program assistant coordinator: Laura Nakielski!
- The program has continued to host in-person meeting sand events (when social distancing is allowed) more often, but many meetings are still being conducted virtually as coalition members are spread out geographically.



Tobacco Prevention Education and Outreach

- Provided Best Practice Tobacco-Free School policies with updated language prohibiting the use of e-cigarettes by youth and adults on school grounds.
- Provided the In-Depth American Lung Association Cessation Training for school staff to increase quit efforts with youth.
- Completed five radio interviews to provide education on cessation and prevention efforts in the community.
- Provided information to Colleges about grant opportunities for nicotine prevention programs on campus through SPARK and the Truth Initiative.
- Held 24 meetings with various community members to learn more about their organizational needs, as well as the support the coalition could provide to the organizations.
- Held three informational meetings with state and local leaders.
- Completed a community education campaign with coalition members.
- Provided two educational presentations collaborating with coalition members and community partners.

COMMUNITY HEALTH AND PREVENTION

FACT: Youth Tobacco Prevention Volunteers

- Established and maintained a FACT group within Fond du Lac High School. Group meets every other week along with the school's STAAND (Students Taking Action Against Negative Decisions) group.
- At the end of 2022, the coalition was able to initiate two new FACT groups at St. Mary Springs High School and Ripon Middle School.



FACT display at Fond du Lac High School

Tobacco Compliance Checks

- No Tobacco Compliance checks were completed in 2022 due to the COVID-19 pandemic. Compliance checks will be resuming in 2023.
- Provided updates to tobacco retailers and their employees on FREE training and Tobacco 21 resources provided by the State WI Wins program.
- Submitted press releases to inform the public about the new tobacco 21 law.
- Promoted the WI Department of Health Services Tobacco Is Changing website.
- Participated in radio interviews explaining the new Federal Law.
- Provided information to local law enforcement addressing preemption.
- Provided information to municipal clerks.
- Increased social media informing the public about the Federal Tobacco 21 law.
- Educated state candidates on the purpose of tobacco compliance checks and the Tobacco 21 law.

Statewide Smoke-Free Air Law

- Educational resources were provided to the public.
- Responded to complaints of indoor smoking in public and residential settings.
- Provided educational resources about secondhand smoke exposure and smoke-free housing policies to residents of multi-united housing (apartment buildings).

COMMUNITY HEALTH AND PREVENTION

Emergency Preparedness

Goal: Fond du Lac County is prepared to respond to all emergencies with a detailed plan of action and a system of communication with community responders. This response includes:

- Detecting disease outbreaks
- Investigating to determine exposure and risks to the public
- Informing public and professionals of the specific disease threats and how to protect themselves and others
- Managing infected persons; isolating or quarantining affected individuals as appropriate
- Providing medications or vaccinations to people at risk in the population

2022 Activities:

Preparedness Capabilities

- 2022 priority capabilities included
 - Capability 11: Nonpharmaceutical Interventions
 - Capability 12: Public Health Laboratory Testing
 - Capability 13: Public Health Surveillance & Epidemiologic Investigation

State, Regional and Local Collaborations:

- Southeast Wisconsin Healthcare Emergency Readiness Coalition, Inc. (HERC Region 7)
- HERC Region 7 Public Health Caucus
- Fox Valley Healthcare Emergency Readiness Coalition, Inc. (HERC 6)
- Other local public health partners

Internal Activities

- **Exercises and After Action Reports (AARs)**
 - One full-scale exercise was conducted in 2022. The exercise was a walk-thru mass vaccination clinic using inactivated influenza vaccine (injectable) or attenuated influenza vaccine (FluMist) for Fond du Lac County school aged children. Collaboration involved 44 schools, seasonal staff and students. The exercise tested communication, community collaboration, staffing and the Incident Command Structure. Following the exercise, an AAR was written. The AAR documented major strengths and areas that need improvement.
- **Plans**
 - Continuity of Operations (COOP): The purpose of the plan is to ensure that essential functions for Fond du Lac County Health Department are continued in the event that manmade, natural, or technological emergencies disrupt or threaten to disrupt normal operations.
 - Crisis and Risk Communication: The plan describes the principles and practices of how the Fond du Lac County Health Department conveys information to stakeholders and the public when the Public Health Emergency Plan (PHEP) is activated.

COMMUNITY HEALTH AND PREVENTION

Internal Activities (Continued)

- **Policies**

- (NEW) Health Alert Network (HAN) Procedure: This policy describes the procedure of when the Fond du Lac County Health Department receives a HAN issues by the Centers for Disease Control and Prevention or Department of Health Services, or a CodeRED Alert issued by Fond du Lac County Emergency Management.

- **Situational Awareness Reports**

- Throughout 2022, there was an Avian Influenza outbreak as well as a Monkeypox (Mpox) outbreak. Public Health was notified of the outbreaks through the CDC Health Alert Network (HAN). Situational reports were shared frequently with community partners. All actions taken by public health were logged on a timeline. There were no cases of either outbreaks in Fond du Lac County.

- **Trainings**

- Dodge County/City of Waupun hosted an Integrated Emergency Management course. 4 staff were able to take the 3 day course and participate in a full-scale exercise. From this training, staff gained a better understanding of Public Health's role and responsibilities during an emergencies.
- The Emergency Preparedness Coordinator attended the 2022 National Preparedness Summit, virtually. The conference information on disaster preparedness, response and recovery planning.
- The Emergency Preparedness Coordinator attend the Homeland Security Exercise and Evaluation Program (HSEEP) course. HSEEP provides a set of guiding principles for exercise and evaluation programs, and a common approach to exercise program management, design/development, conduct, evaluation, and improvement planning.
- The American Red Cross hosted an in-person Mass Care/Shelter workshop. The workshop provided agencies with the opportunity to exchange experiences, improve understanding of services, share best practices, as well as discuss current and emerging challenges we face associated with the increasing number of disasters each year.



**American
Red Cross**



COMMUNITY HEALTH AND PREVENTION

Release Advance Planning Program

Goal: to reduce recidivism among Fond du Lac County inmates by providing individuals with the resources necessary to reintegrate into the community successfully upon release from jail.

The Release Advance Planning (RAP) Program identifies the needs of individuals leaving the Fond du Lac County Jail and convenes a team of community partners to help address the needs of the client. A community-based steering committee helps partners collaborate to provide community resources to jail inmates with complex needs (such as mental illness, health problems, maternal care, veterans support, alcohol and/or drug dependency, homelessness). A customized care plan is created to address the individuals needs. This care plan includes a list of appointments and additional community resources. The program was placed on hold in March 2020, due to the COVID-19 pandemic. The RAP program resumed operation on July 2021 but placed on hold again from November 2021 through March 2022 due to COVID-19 case surge.

Strategies and activities:

- New outreach strategies were set in placed to bring awareness to the program among incarcerated individuals. Large movie sized posters placed in key locations throughout the jail. Flyers with general program information and requirement added to the jail handbook as well as well as information on Public Health and W.I.C services.
- The program increased collaboration with agencies throughout the state to assist individuals in need for treatment for substance and alcohol misuse.
- The RAP Coordinator collaborates with community partners for assistance for housing and homelessness prevention. Local community partners have provided homeless individuals with warm clothing in winter months.
- Provides referrals to local agencies for job readiness and employment.

2022 Highlights:

- Individuals were able to sign up to receive the COVID-19 vaccine. A total of 67 individuals received the COVID-19 vaccine in 2022. Due to the increase in drug overdoses in Fond du Lac County and the increasing need for treatment for substance and alcohol use among individual who are incarcerated, the Public Health Department wrote for and was awarded at \$150,000 grant through the Department of Justice in April 2022. The number of RAP participants decreased in 2022 due to the implementation of the MAT Program.

Number of active participants		
2020	2021	2022
16	42	20

COMMUNITY HEALTH AND PREVENTION

Medication for Addiction Treatment Program

Goal: The Fond du Lac County Health Department in partnership with the Fond du Lac County Jail, SSM Healthcare, Department of Community Programs, and Probation and Parole to provide medication-assisted treatment and counseling to individuals who are incarcerated at the Fond du Lac County Jail who express struggles with substance misuse. With the early intervention of patient education regarding substance misuse, naloxone education and distribution, counseling, naltrexone medication treatment, which will in turn reduce the rate of drug overdoses in Fond du Lac County. With providing these early interventions to incarcerated individuals who state substance misuse at booking by having the Release Advance Planning (RAP) Coordinator from the Health Department meet one-on-one with the individual to discuss the resources listed above. This will not only benefit Fond du Lac County but additional counties as well in Wisconsin.

The Medication for Addiction Treatment (MAT) Program target population is any individual who expresses struggles with substance misuse. This is not limited to Fond du Lac County residents but will be open to any new booking. Through this grant opportunity, we are planning on reviewing jail bookings and assessing for inmates that state substance misuse during the booking process. This will provide opportunities for early intervention of substance misuse and harm reduction education, naloxone education and distribution, and referral to community resources. In addition, individuals with opioid use disorder experience decreased tolerance after a period of non-use (such as experienced during incarceration). This increases risk for overdose. Other risk factors among this population of focus may include previous overdoses (nonfatal), mixing drugs such as opioid with alcohol or benzodiazepines, and the risk of unknown purity levels in substances being used, such as fentanyl being a high potency opioid being mixed in other drug supply.

Strategies and activities:

- The MAT Coordinator along with the Communicable Disease nurse started hosting a twice a month Narcan and Hepatitis C/HIV prevention classes. These classes provide education on signs and symptoms of a drug overdose, how to use Narcan, how to prevent the spread of Hepatitis C/HIV, and other harm reduction topics. One-on one education is provided for quick releases and for those individuals who request one-on-one training. Since its inception in June 2022, 56 Narcan kits were distributed.
- Increasing messaging throughout the jail and in, the jail lobby took place to help bring awareness to the MAT Program and to community resources.
- Outreach to MAT Clients post release to provide additional support and continued connection to community resources.

2022 Highlights:

- Since June 2022, 11 individuals received connection to treatment services prior to release. Four of the individuals were able to receive the Vivitrol injection prior to release.

COMMUNITY HEALTH AND PREVENTION

Self-Harm Death Review Team

FCHD coordinates a Self-Harm Death Review Team (SDRT). The purpose of SDRT is to better understand deaths by suicide, identify prevention recommendations, catalyze community action for suicide prevention, and improve the health and safety of the community. On a quarterly basis, a team of about 20 multidisciplinary, cross-sector partners convene to better understand and prevent deaths by suicide in our community. The Mental Health Action Team, which consists of local mental health professionals, then helps plays a lead role in implementing suicide prevention recommendations, such as Question, Persuade, and Refer (QPR) suicide prevention trainings. In 2022, we received grant funding from the Medical College of Wisconsin to begin to cover overdose fatalities in addition to suicides in 2023.

Healthy Fond du Lac County

The mission of Healthy Fond du Lac County is to assess, identify, address, and monitor priority health needs through community collaboration. The Healthy Fond du Lac County Steering Committee is an advisory group that oversees the local community health improvement process, which consists of a Community Health Assessment (CHA) and Community Health Improvement Plan (CHIP). Work began on the 2022-2024 Community Health Improvement Plan by hosting three community strategizing sessions to gather community feedback on what strategies should be implemented to improve the health priorities as determined from the 2021 CHA: Mental Health, Chronic Disease, and Substance Use. Action teams related to each priority meet and implement strategies to improve the health priorities.

FOND DU LAC COUNTY

Let's mobilize health in our community
Mental Health - Chronic Disease - Substance Use

Strategizing our 2022-2024 community health improvement plan

Featuring 3 Community Planning Discussions

Free & Open to the Public

Mental Health MARIAN UNIVERSITY	Oct 4 7:00-8:30am
Chronic Disease MARIAN UNIVERSITY	Oct 5 7:00-8:30am
Substance Use RIPON COLLEGE	Oct 6 8:00-9:30am

Register to attend
**Scan the QR code or click this link to sign up**
Questions? Email: sarah.gradinjan@fdlco.wi.gov or visit www.fdlco.wi.gov and search "Healthy Fond du Lac County"

COMMUNITY HEALTH AND PREVENTION

Community Outreach

Community Narcan Trainings

Naloxone education distribution programs are evidenced-based strategies that increase knowledge of appropriate overdose response and reduce overdose deaths. Narcan is the easy-to-use nasal spray formulation of naloxone, a medication that can reverse an opioid overdose.

FCHD continues to participate in the Narcan Direct Program sponsored by WI DHS which allows agencies to provide Narcan at no cost to the community. FCHD currently has 4 individuals on staff trained to provide Narcan.

368 Narcan kits distributed

346 community members trained on how to administer Narcan

Hope on the Block

Hope on the Block is a non-profit organization that provides community resources and pantry items to ensure those who are facing homelessness in Fond du Lac County have the resources they need after community resource agencies are closed.



In early 2022 Hope on the Block was created when several community members began collaborating on how to help bridge the gaps within the homeless population in Fond du Lac County. At the same time three student at the North Fond du Lac High School were creating the foundations of Hope on the Block as a school project. The first essential needs pantry was opened at the Fond du Lac Public Library in August 2022 and has helped countless individuals with needed supplies and resources.

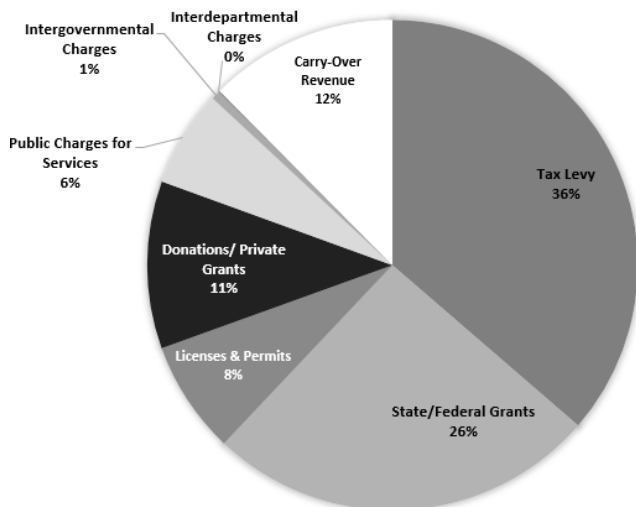
This project is in partnership with the Fond du Lac Public Library, Sustain Fond du Lac, Fond du Lac County Salvation Army, Fond du Lac County Fire and Rescue, and Fond du Lac County Health Department.

FINANCIAL SUMMARY

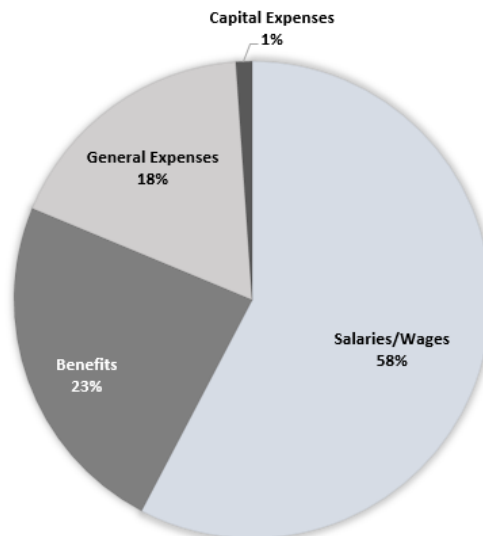
Budget Summary

	2022	2021	2020
Revenue			
Tax Levy	\$1,711,820	\$1,663,395	\$1,473,950
State/Federal Grants	\$1,244,470	\$1,988,606	\$2,269,280
Licenses and Permits	\$350,789	\$335,068	\$273,805
Donations/Private Grants	\$520,455	\$495,877	\$423,468
Public Charges for Services	\$299,731	\$103,634	\$204,909
Intergovernmental Charges	\$26,796	\$23,890	\$40,031
Interdepartmental Charges	\$4,031	\$4,509	\$6,000
Carry-Over Revenue	\$585,811	\$525,566	\$262,418
Total Revenues	\$4,743,903	\$5,140,545	\$5,152,666
Expenditures			
Salaries/Wages	\$1,939,307	\$2,120,708	\$2,031,777
Benefits	\$786,276	\$780,816	\$784,645
General Expenses	\$607,501	\$498,960	\$521,724
Capital Expenses	\$36,449	\$214,781	\$87,455
Total Expenses	\$3,369,533	\$3,606,265	\$3,425,601

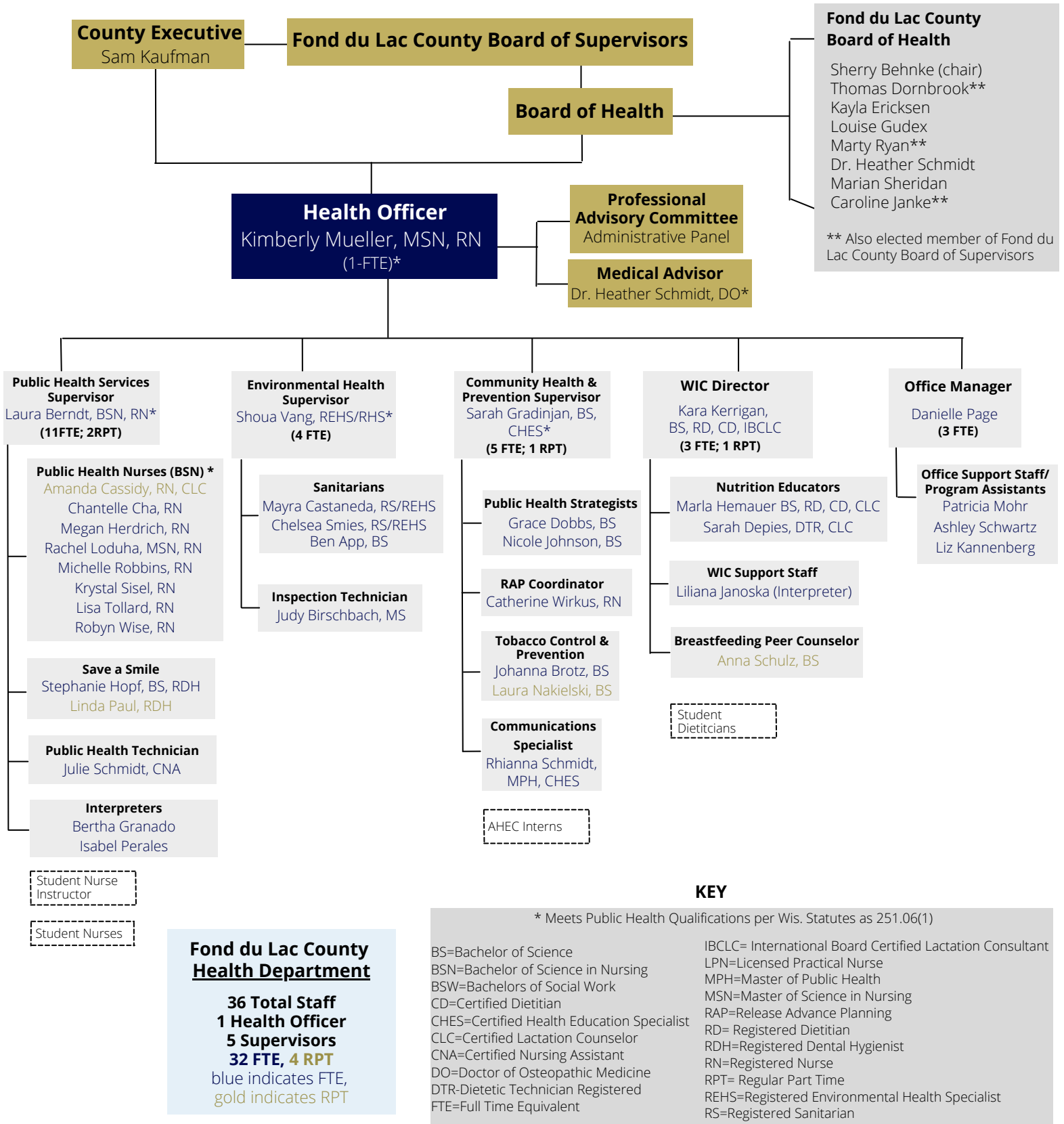
2022 Actual Revenue



2022 Actual Expenditures



ORGANIZATIONAL CHART



Current as of December 31st, 2022

CONNECTING WITH THE COMMUNITY

Follow us on social media!



Fond du Lac County
Health Department



@fdlcopublichealth



@fonddulacounty

Subscribe for Updates

Visit our [website](#) to view and subscribe to our monthly newsletter to see the most up to date information for our community.

Contact us

Are you interested in having Public Health representation at a health fair or event?
Make a request online at fdlco.wi.gov.

2022 Annual Report

For additional copies of this report call 920-929-3085 or visit our website at www.fdlco.wi.gov.

Information Sources: Wisconsin Department of Health Services, Public Health Profiles, Fond du Lac County Health Department



Public Health
Prevent. Promote. Protect.

**Fond du Lac County
Health Department**

FOND DU LAC COUNTY HEALTH DEPARTMENT

Fond du Lac City/County Government Center
160 South Macy Street, 3rd Floor
Fond du Lac, WI 54935

Hours: M - F 8 am- 4:30 pm
(920) 929-3085
www.fdlco.wi.gov